



**HYC-1031GD**



**±1.5°C**

Temperature  
Uniformity



**2.4kWh**

Energy  
Consumption



**39dB(A)**

Noise Level

# Pharmacy Refrigerator

## Scope of Application:

The product is applicable to pharmacies, pharmaceutical factories, quarantine stations, health centers and hospitals, used to store biological products and those need to be stored at a temperature between 2-8°C.

**Qingdao Haier Biomedical Co.,Ltd.**

No.280 Feng Yuan Road, High-tech Zone,  
Qingdao, 266109, P.R. China  
Tel: +86-0532-88935593  
Website: [www.haiermedical.com](http://www.haiermedical.com)



Haier Biomedical  
International



Haier Biomedical  
International



@haiermedicalint










Haier Biomedical  
International

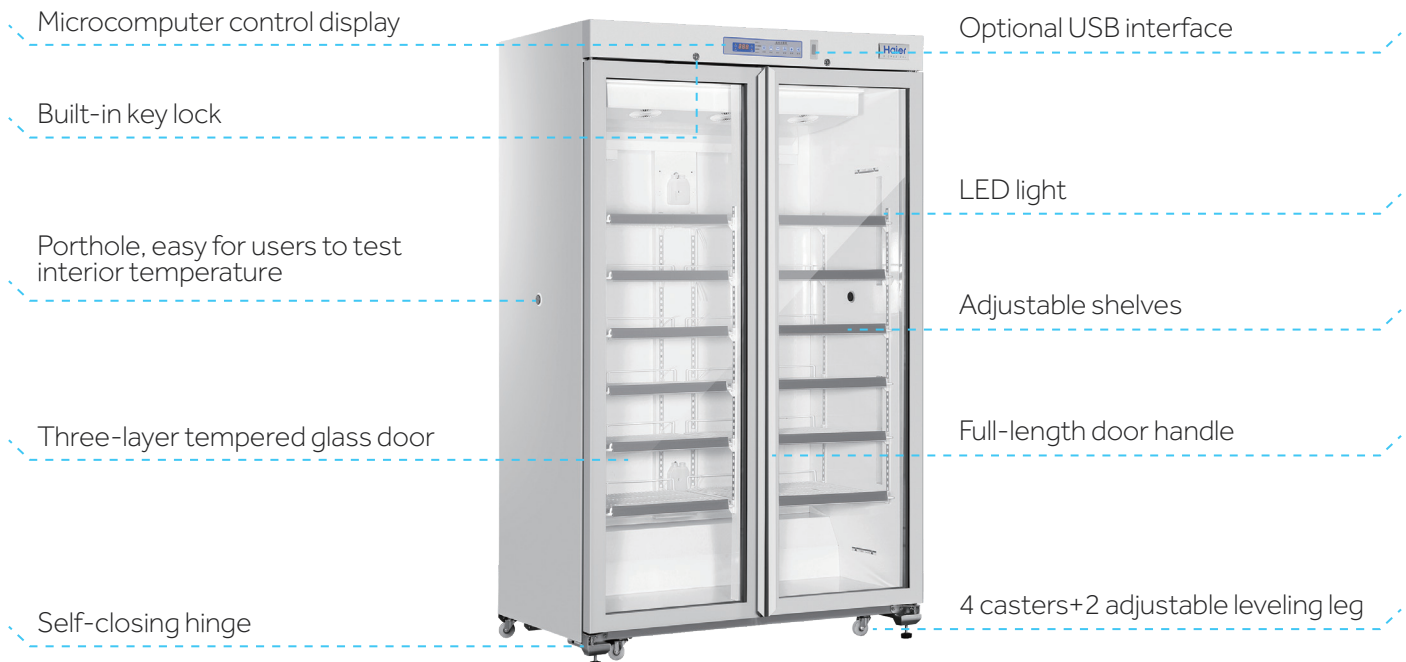


Haier Biomedical  
International

## Product Advantages

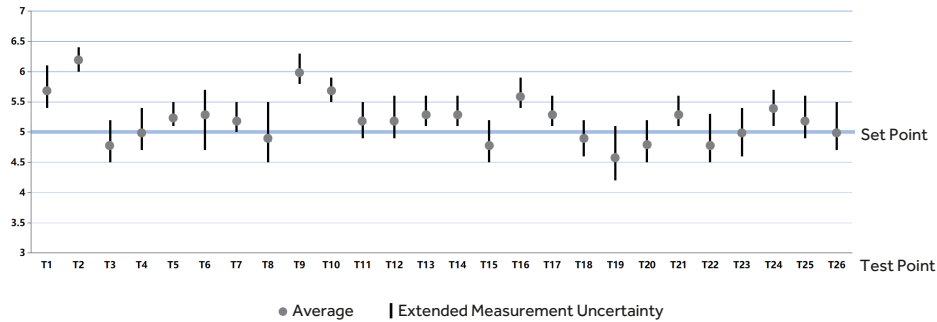
-  Three-layer tempered glass door, filled with inert gas, low-E film to effectively reduce the risk of condensation
-  Microprocessor controller, digital display with resolution of 0.1°C
-  Large capacity of up to 1031L
-  Temperature uniformity  $\leq \pm 1.5^{\circ}\text{C}$
-  Hermetically sealed compressor, forced-air circulation and automatic defrost to ensure high cooling performance
-  Optional USB interface, RS485 interface, printer, easy to export data
-  Self-closing door with magnetic gasket for positive seal

## Product Parts



## Temperature Curve

Internal Temperature, Ambient Temperature 25°C



## Specifications

Model			HYC-1031GD	
Technical Data	Cabinet Type		Upright	
	Climate Class		N, 16~32°C	
	Cooling Type		Forced air circulation	
	Defrost Mode		Auto defrost	
	Refrigerant		R290	
	Sound Level (dB(A))		39	
Performance	Temperature Range (°C)		2~8	
Control	Controller		Microprocessor	
	Display		LED	
Electrical Data	Power Supply (V/Hz)		220~240; 50/60	
	Power (W)		450	
	Electrical Current (A)		2.2	
	Power Consumption (kWh/day)		2.4	
Dimensions	Capacity (L/Cu.Ft)		1031	
	Net/Gross Weight (approx)	(kg)	265	
	Interior Dimensions (W*D*H)	(mm)	1115*590*1670	
	Exterior Dimensions (W*D*H)	(mm)	1205*730*1990	
	Packing Dimensions (W*D*H)	(mm)	1260*905*2110	
	Container Load (20'/40'/40'H)		10/22/22	
Alarms	High/Low Temperature		Y	
	High Ambient Temperature		Y	
	Door Ajar		Y	
	Power Failure		Y	
	Low Battery		Y	
	Sensor Error		Y	
	Communication Failure		Y	
	Condenser Heat		Y	
Accessories	Remote Alarm		Y	
	Caster		4	
	Foot		2	
	Porthole		2	
	Shelves/Drawers		12/-	
	Printer		Optional	
	USB Interface		Optional	
Other	RS485		Optional	
	CE		Coming soon	

\*Haier Biomedical reserves the right to change products and specifications without prior notice.